

LUKS Mount How-to Guide For MS Windows

Copyright reserved 2009, Aerospace Software Ltd., GPL.

The LUKS Format wizard will format a USB disk according to the default requirements of the FreeOTFE program used on Windows, to ensure that the encrypted disks can be transferred between Linux and Windows systems with ease.

Install

Get FreeOTFE here: <http://www.freeotfe.org/download.html>

To install the FreeOTFE utility on Windows, you need Administrator access.

Linux Compatibility

You need to create the encrypted USB disk partition on Linux with specific features, otherwise Windows won't know what to do with it:

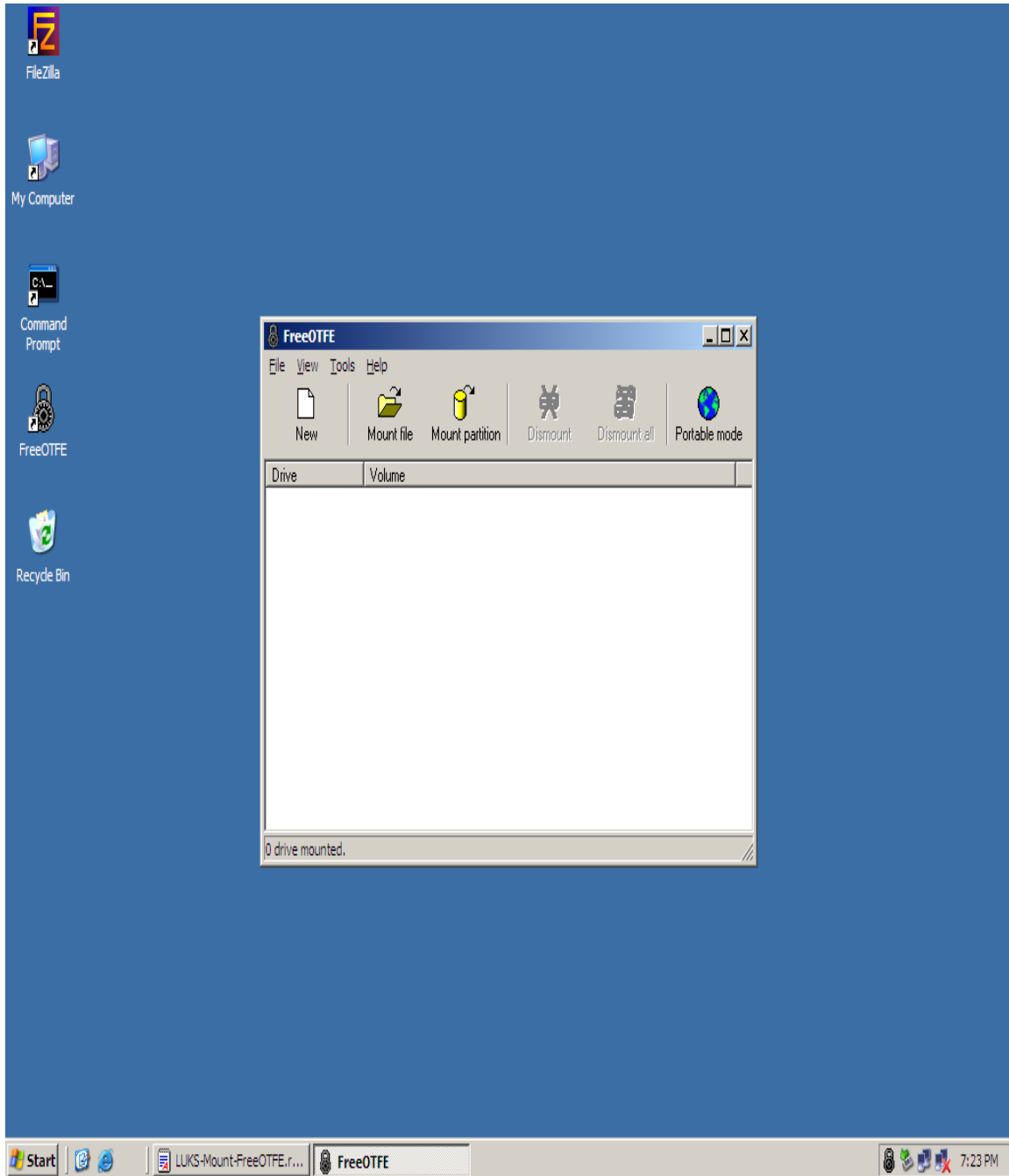
- It must be a single primary partition.
- The encryption must be AES256, CBC, ESSIV, SHA256.

Cryptsetup example:

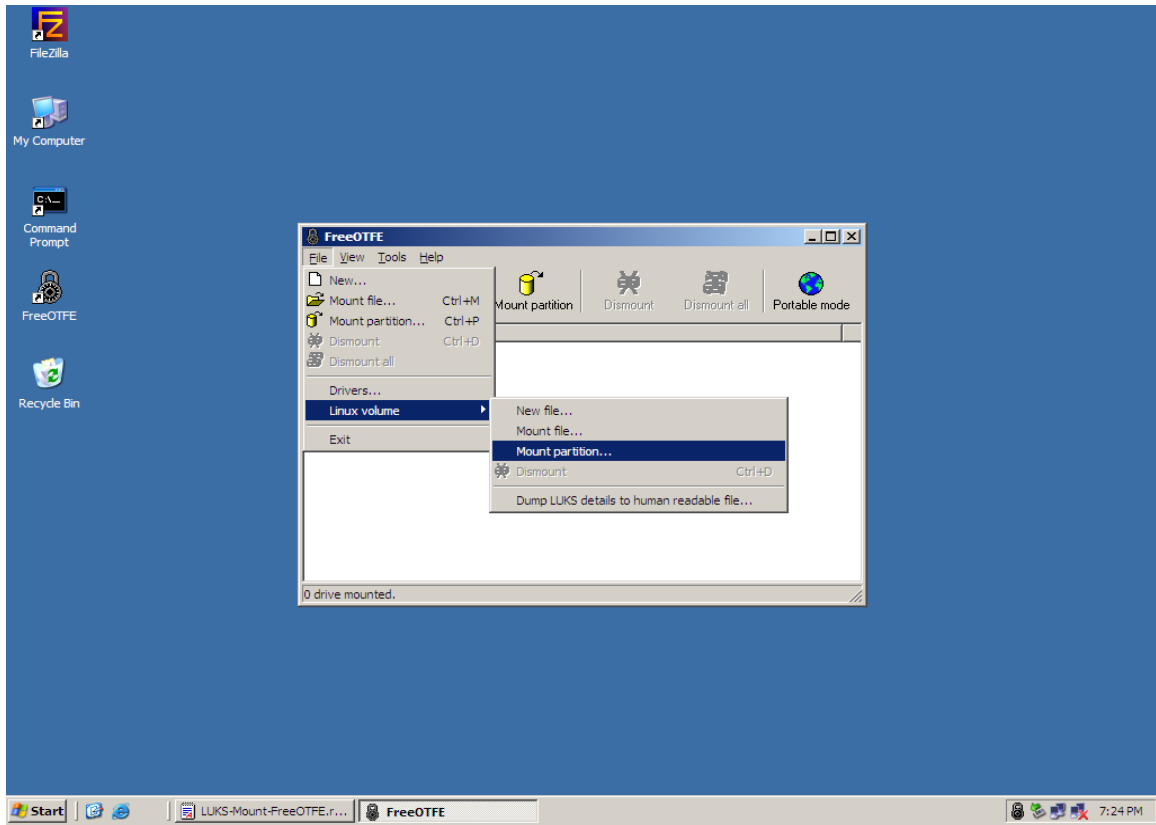
- `cryptsetup luksFormat -c "aes-cbc-essiv:sha256" /dev/sdc1`

Mount a Disk

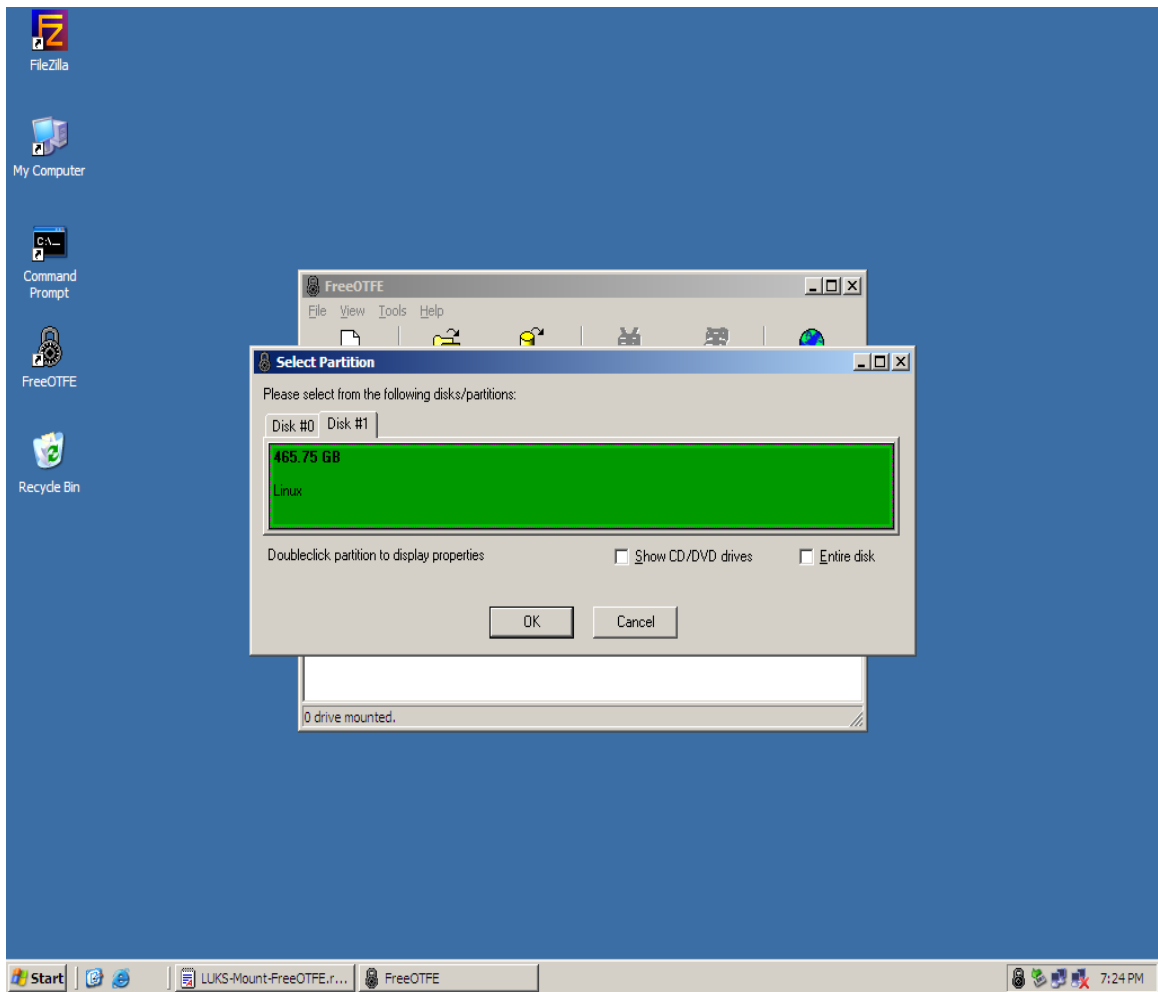
Run FreeOTFE, but don't click anything on it's tool bar.



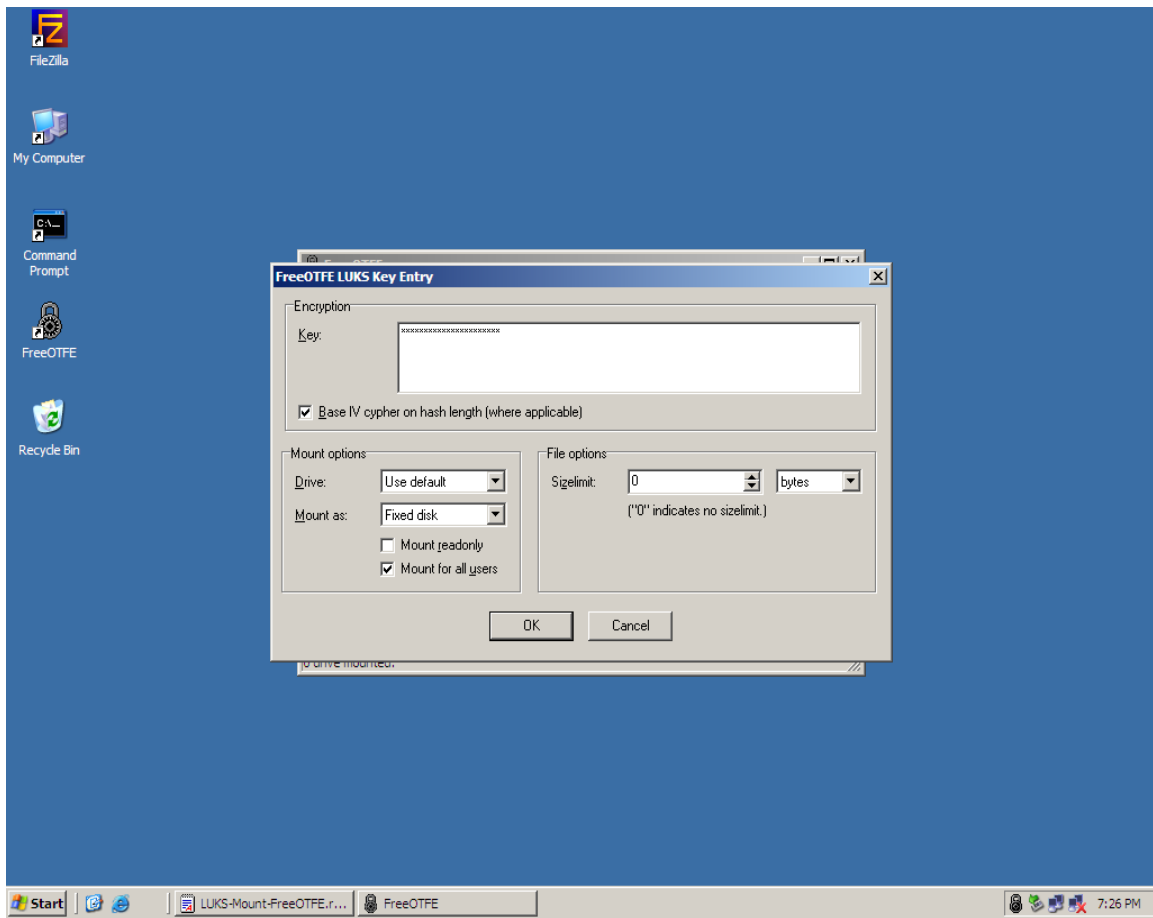
On the FreeOTFE top menu line, click File, Linux Volume, Mount Partition:



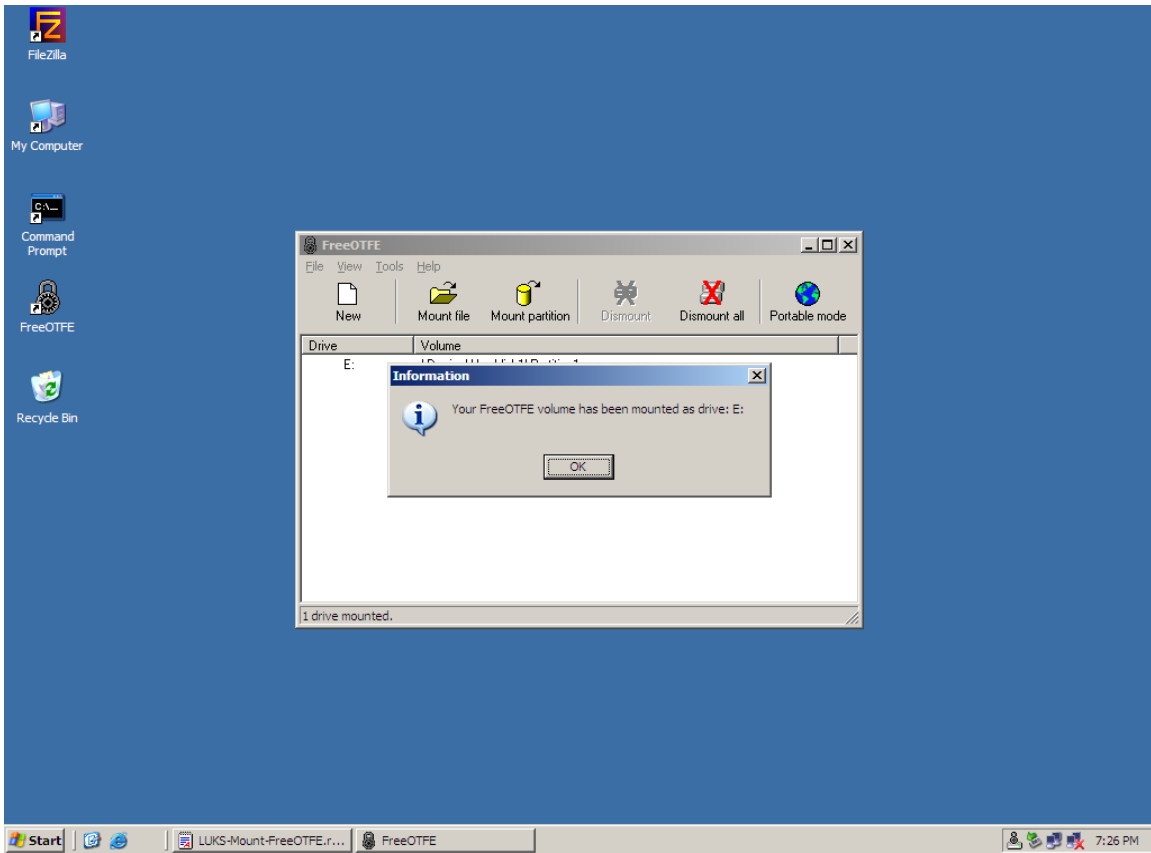
Click the Disk#1 tab, Click ON THE GREEN, then click OK:



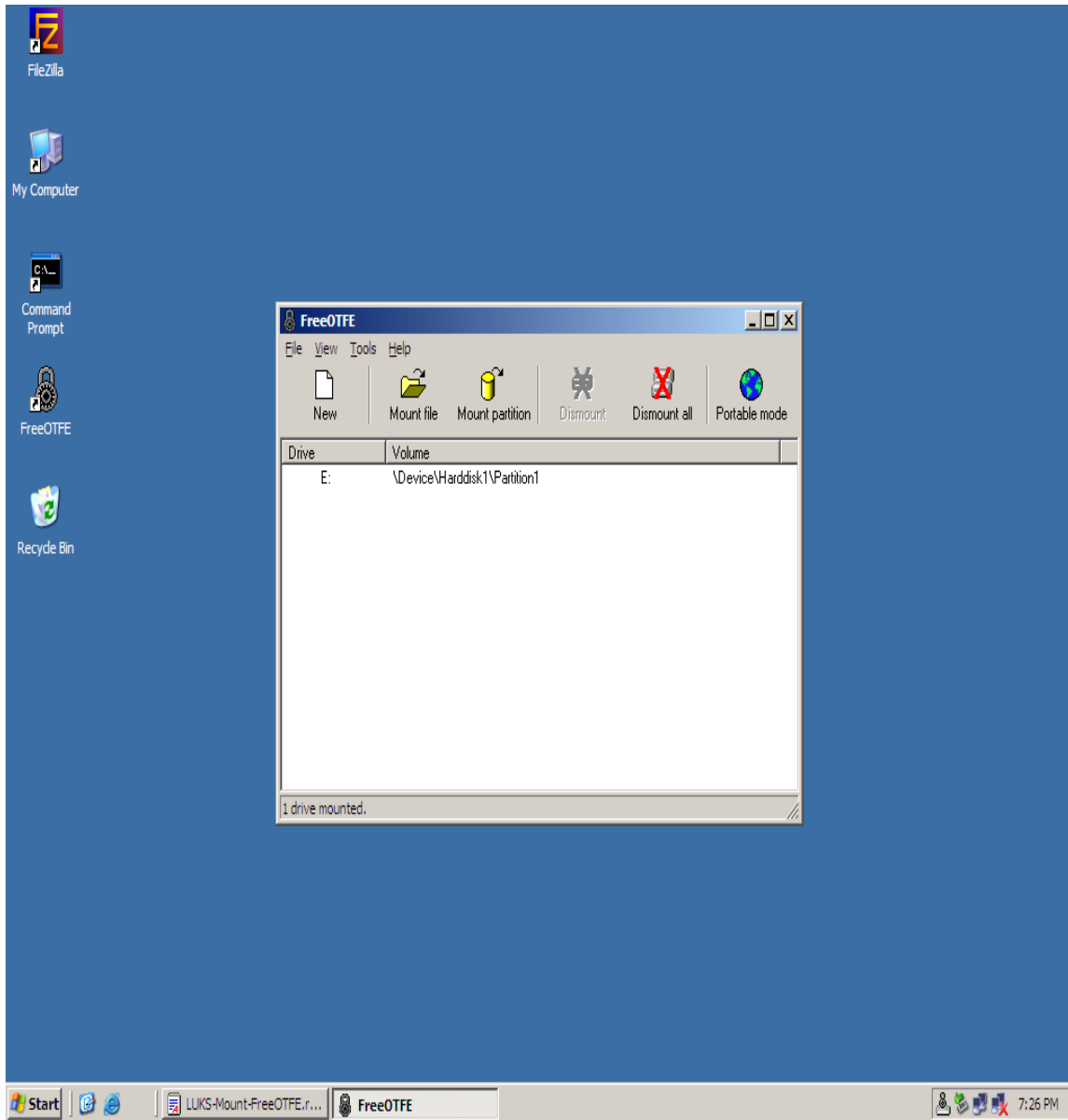
Type the key e.g. supersecret. Don't change any of the default settings:



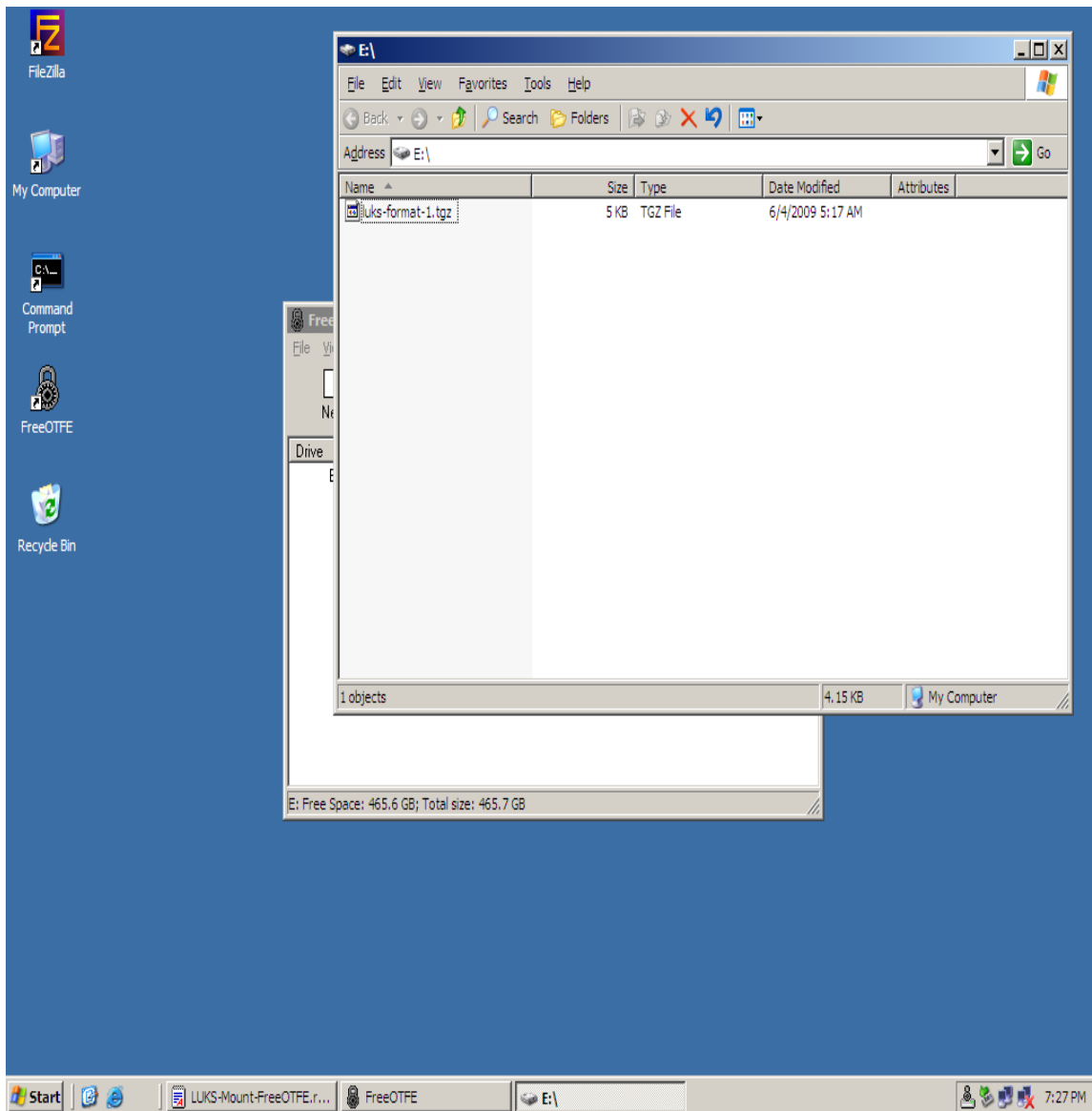
Click OK:



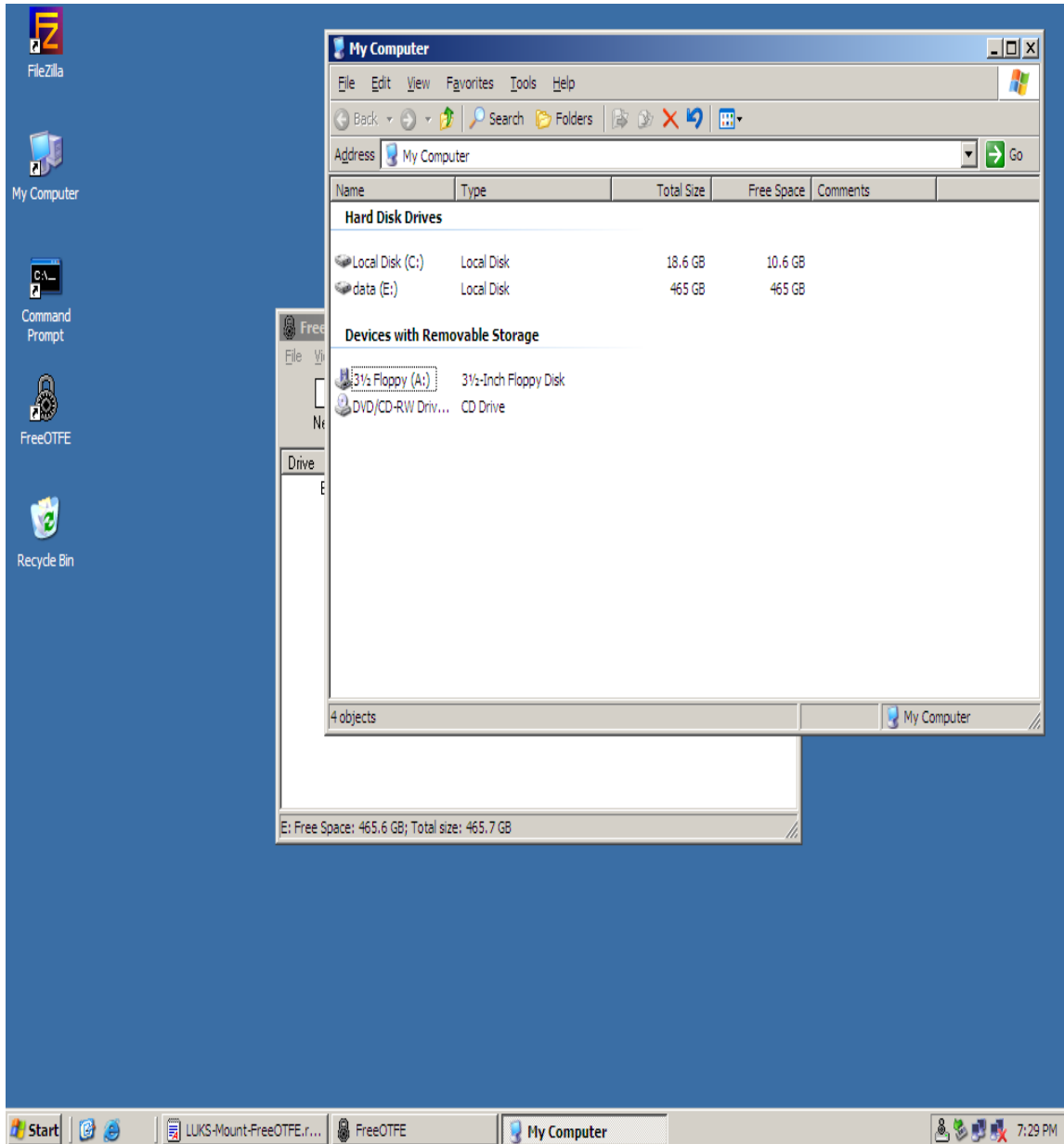
Click OK to show the disk mounted as Drive E: as show below:



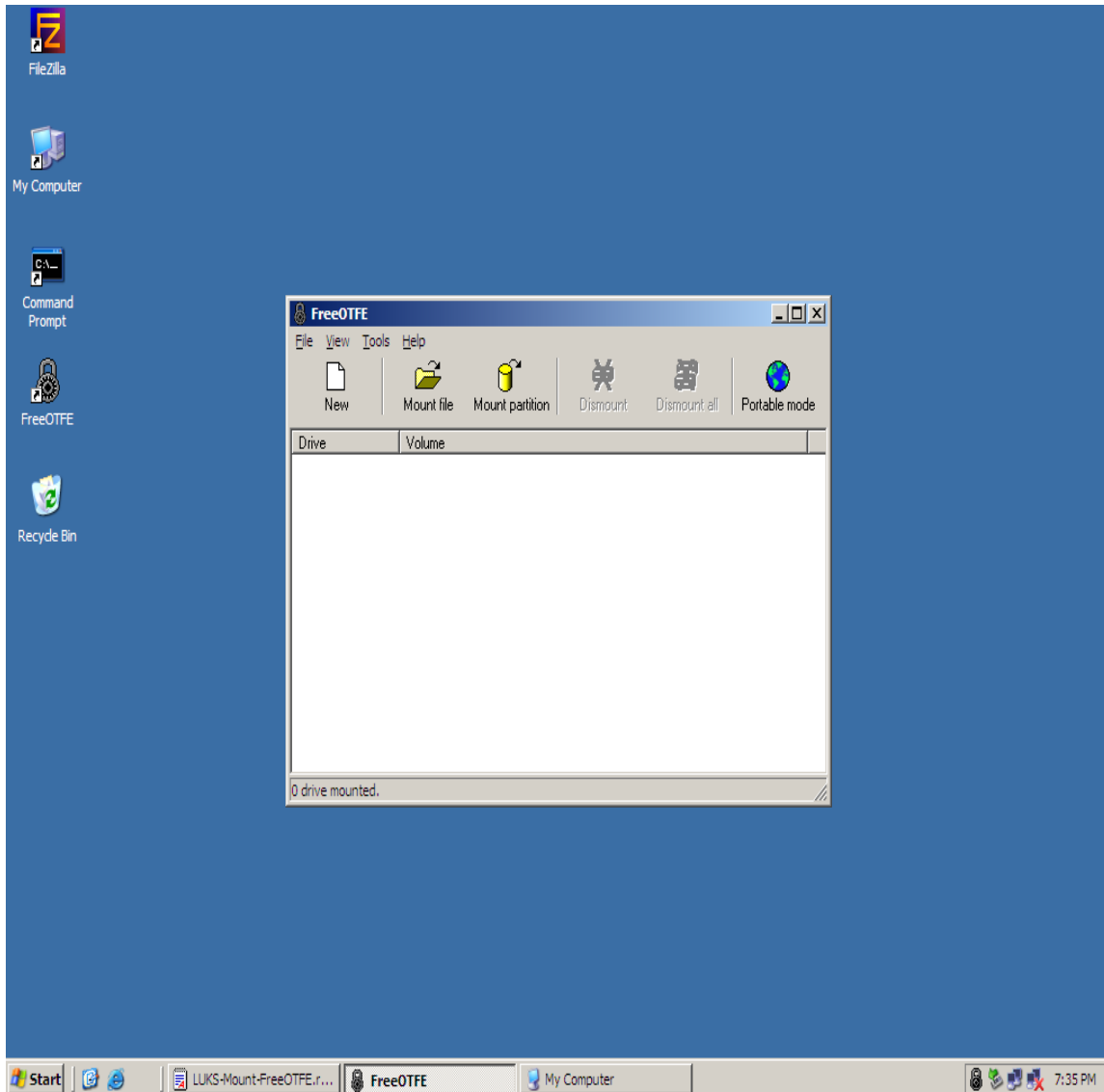
Double click the drive entry to open up the Windows Explorer file browser:



Alternatively run My Computer and the new mounted disk drive will show up in the list, as data (E:) in this case:



When you are done with it, click the FreeOTFE Dismount button before the disk, do not simply yank the cord out, since it can get corrupted.



La voila!